

2PS

H7~H115 series

Applicative units for: Chemical industry, Pure water system, etc.

Working Pressure: 0.98Mpa (10kgf/cm²)

Working Temp. Depending on fluid

Connection: female thread; socket

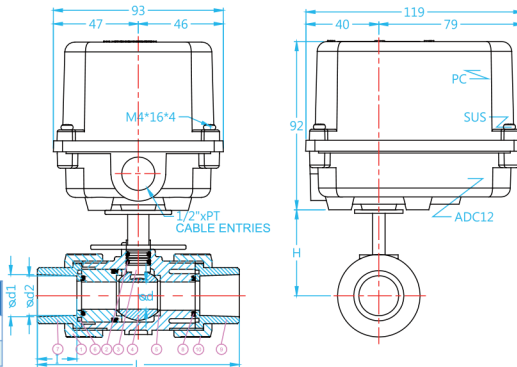
Suitable actuator: H7~ H115 model



NO	PART NAME	MATERIAL
1	BODY	UPVC . PP . PVDF
2	STEM O-RING	EPDM
3	STEM	UPVC . PP . PVDF
4	BALL	UPVC . PP . PVDF
5	SEAT SEAL	PTFE
6	CARRIER O-RING	EPDM
7	SEAL CARRIER	UPVC . PP . PVDF
8	UNION O-RING	EPDM
9	END CONNECTOR	UPVC . PP . PVDF
10	UNION NUT	UPVC . PP . PVDF

H7~H20

2PS series

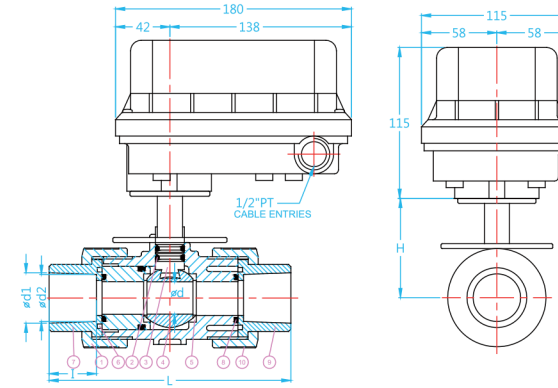


SIZE	mm	d1	JIS d2	I	d1	DIN d2	I	H	d	L
1/2"	DN15	22.30	21.70	22.22	20.3	20.1	16	59	13	112
3/4"	DN20	26.30	25.70	25.40	25.3	25.1	19	59	18	132

Model	H7A2215-2PS--	H10A2230-2PS--
Size range	DN15 to DN20	DN15 to DN20
Voltage supply (50/60Hz)	AC220V ±10%	AC220V ±10%
Control Signal	ON-OFF	ON-OFF
Running Current	0.1A	0.5A
Timing Nominal Driving quarter turn to open / close gate of valve	50Hz: 16sec 60Hz: 15sec	31sec 30sec
Motor Power	5W	5W
Performance Operation	Non Consecutive unning	Consecutive running
Insulation level	E	
Waterproof level	IP66	
Storage Temp. Range	-10°C to 50°C	
Operating Humidity Range	5 to 90% RH	
Electrical connection	1/2" cable connector	
Diameter of cable	1.25mm	
Optional Items	Auxiliary switches 2(SPDT) /Potentiometer	

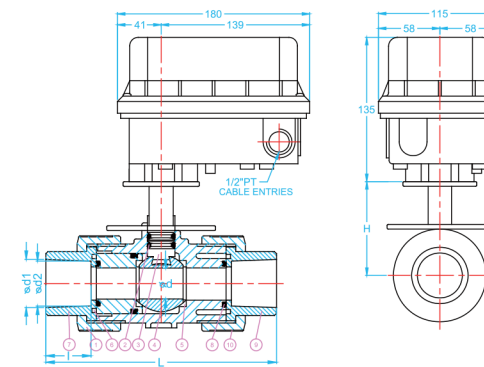
H18~H45

2PS series



SIZE	mm	JIS d1	JIS d2	I	DIN d1	DIN d2	I	H	d	L
1"	DN25	32.33	31.67	28.6	32.3	32.1	22	87.5	23	144
1 1/4"	DN32	38.43	37.57	31.75	40.3	40.1	26	90	30	167
1 1/2"	DN40	48.46	47.54	34.9	50.3	50.1	31	91	38	172

Model No.	H18A2207-2PS--	H35A2230-2PS--	H48A2230-2PS--	MH32A2230-2PS--
Size range	DN25 to DN32	DN25 to DN32	DN25 to DN40	DN25 to DN32
Voltage supply	50/60Hz AC220V ±10%	AC220V ±10%	AC220V ±10%	AC220V ±10%
Control Signal	ON-OFF	ON-OFF	ON-OFF	4~20mA / 2-10V
Running Current	0.2A	0.15A	0.3A	0.15A
Timing Nominal Driving quarter turn to open / close gate of valve	50Hz: 8sec 60Hz: 7sec	36sec 30sec	36sec 30sec	36sec 30sec
Motor Power	25W	10W	25W	10W
Performance Operation	Non consecutive running	Consecutive running	Non consecutive running	Consecutive running
Insulation level	E class			
Waterproof level	IP66			
Storage Temp. Range	-10°C to 50°C			
Operating Humidity Range	5 to 90% RH			
Electrical connection	1/2" cable connector			
Diameter of cable	1.25mm			
Optional Items	Auxiliary switches 2(SPDT) / Potentiometer 1KΩ			4~20mA Feedback



SIZE	mm	JIS d1	JIS d2	I	DIN d1	DIN d2	I	H	d	L
1 1/2"	DN40	48.46	47.54	34.9	50.3	50.1	31	91	38	172
2"	DN50	60.56	59.44	38.10	63.3	63.1	38	102	48	206
2 1/2"	DN65	76.60	75.87	60.7	-	-	-	88	61	273

Model No.	H45A2250-2PS--	H70A2207-2PS--	H70A2275-2PS--	H115A2215-2PS--	MH42A2250-2PS--	MH67A2275-2PS--
Size range	DN40 to DN50	DN40 to DN50	DN40 to DN50	DN40 to DN65	DN40 to DN50	DN40 to DN50
Voltage supply	50/60Hz AC220V ±10%	AC220V ±10%	AC220V ±10%	AC220V ±10%	AC220V ±10%	AC220V ±10%
Control Signal	ON-OFF	ON-OFF	ON-OFF	ON-OFF	4~20mA / 2-10V	4~20mA / 2-10V
Running Current	0.2A	0.3A	0.2A	0.3A	0.2A	0.2A
Timing Nominal Driving quarter turn to open / close gate of valve	50Hz: 60sec 60Hz: 50sec	8sec 7sec	95sec 75sec	16sec 15sec	60sec 50sec	95sec 75sec
Motor Power	10W	35W	10W	35W	10W	10W
Performance Operation	Consecutive running	Non consecutive running	Consecutive running	Non consecutive running	Consecutive running	Consecutive running
Insulation level	E class					
Waterproof level	IP66					
Storage Temp. Range	-10°C to 50°C					
Operating Humidity Range	5 to 90% RH					
Electrical connection	1/2" cable connector					
Diameter of cable	1.25mm					
Optional Items	Auxiliary switches 2(SPDT) / Potentiometer 1KΩ					4~20mA Feedback

2PF

H7~H115 series

Applicative units for: Chemical industry, Pure water system...etc.

Working Pressure: 0.98Mpa (10kgf/cm²)

Working Temp. Depending on fluid

Connection: Flange end

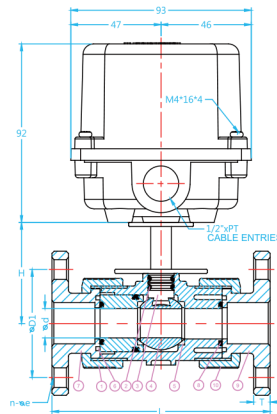


NO	PART NAME	MATERIAL
1	BODY	UPVC . PP . PVDF
2	STEM O-RING	EPDM
3	STEM	UPVC . PP . PVDF
4	BALL	UPVC . PP . PVDF
5	SEAT SEAL	PTFE
6	CARRIER O-RING	EPDM
7	SEAL CARRIER	UPVC . PP . PVDF
8	UNION O-RING	EPDM
9	END CONNECTOR	UPVC . PP . PVDF
10	UNION NUT	UPVC . PP . PVDF

H7~H20

2PF series

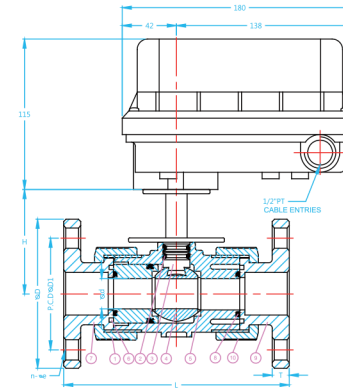
SIZE	mm	JIS			DIN			H	d
		D1	L	n- ϕ e	D1	L	n- ϕ e		
1/2"	DN15	70	143	4-15	65	130	4-14	59	13
3/4"	DN20	75	172	4-15	75	150	4-14	59	18



Model	H7 A2215-2PF--	H10 A2230-2PF--
Size range	DN15 to DN20	DN15 to DN20
Voltage supply (50/60Hz)	AC220V $\pm 10\%$	AC220V $\pm 10\%$
Control Signal	ON-OFF	ON-OFF
Running Current	0.1A	0.5A
Timing Nominal Driving quarter turn to open / close gate of valve	50Hz	16sec
	60Hz	15sec
Motor Power	5W	5W
Performance Operation	Non Consecutive unning	Consecutive running
Insulation level	E class	
Waterproof level	IP66	
Storage Temp. Range	-10°C to 50°C	
Operating Humidity Range	5 to 90% RH	
Electrical connection	1/2" Cable connector	
Diameter of cable	1.25mm	
Optional Items	Auxiliary switches 2(SPDT) / Potentiometer	

H18~H45

2PF series

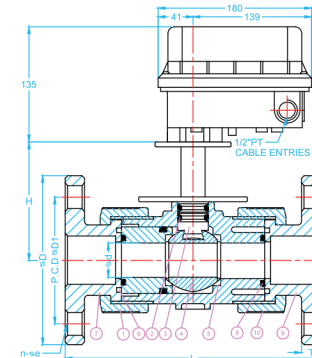


SIZE	mm	JIS			DIN			H	d	T
		D	D1	L	n- ϕ e	D	D1	L	n- ϕ e	
1"	DN25	125	90	187	4-19	115	85	160	4-14	87.5
1 1/4"	DN32	135	100	190	4-19	140	100	180	4-18	90
1 1/2"	DN40	140	105	212	4-19	150	110	200	4-18	91

Model No.	H18A2207-2PF--	H35A2230-2PF--	H48A2230-2PF--	MH32A2230-2PF--
Size range	DN25 to DN32	DN25 to DN32	DN25 to DN40	DN25 to DN32
Voltage supply	50/60Hz AC220V $\pm 10\%$	AC220V $\pm 10\%$	AC220V $\pm 10\%$	AC220V $\pm 10\%$
Control Signal	ON-OFF	ON-OFF	ON-OFF	4~20mA / 2-10V
Running Current	0.2A	0.15A	0.3A	0.15A
Timing Nominal Driving quarter turn to open / close gate of valve	50Hz	8sec	36sec	36sec
	60Hz	7sec	30sec	30sec
Motor Power	25W	10W	25W	10W
Performance Operation	Non consecutive running	Consecutive running	Non consecutive running	Consecutive running
Insulation level	E class			
Waterproof level	IP66			
Storage Temp. Range	-10°C to 50°C			
Operating Humidity Range	5 to 90% RH			
Electrical connection	1/2" cable connector			
Diameter of cable	1.25mm			
Optional Items	Auxiliary switches 2(SPDT) / Potentiometer 1K Ω			4~20mA Feedback

H45~H115

2PF series



SIZE	mm	JIS			DIN			H	d	T
		D	D1	L	n- ϕ e	D	D1	L	n- ϕ e	
1 1/2"	DN40	140	105	212	4-19	150	110	200	4-18	91
2"	DN50	155	120	234	4-19	165	125	230	4-18	102
2 1/2"	DN65	175	140	259	4-19	185	145	290	4-18	88

Model No.	H45A2250-2PF-	H70A2207-2PF--	H70A2275-2PF--	H115A2215-2PF--	MH42A2250-2PF--	MH67A2275-2PF--
Size range	DN40 to DN50	DN40 to DN50	DN40 to DN50	DN40 to DN65	DN40 to DN50	DN40 to DN50
Voltage supply	50/60Hz AC220V $\pm 10\%$	AC220V $\pm 10\%$	AC220V $\pm 10\%$	AC220V $\pm 10\%$	AC220V $\pm 10\%$	AC220V $\pm 10\%$
Control Signal	ON-OFF	ON-OFF	ON-OFF	ON-OFF	0/4~20mA , 1/2~10mA , 0/2-10Vdc	AC220V $\pm 10\%$
Running Current	0.2A	0.3A	0.2A	0.3A	0.2A	0.2A
Timing Nominal Driving quarter turn to open / close gate of valve	50Hz	60sec	8sec	95sec	16sec	60sec
	60Hz	50sec	7sec	75sec	15sec	75sec
Motor Power	10W	35W	10W	35W	10W	10W
Performance Operation	Consecutive running	Non consecutive running	Consecutive running	Non consecutive running	Consecutive running	Consecutive running
Insulation level	E class					
Waterproof level	IP66					
Storage Temp. Range	-10°C to 50°C					
Operating Humidity Range	5 to 90% RH					
Electrical connection	1/2" cable connector					
Diameter of cable	1.25mm					
Optional Items	Auxiliary switches 2(SPDT) / Potentiometer 1K Ω				4~20mA Feedback	